

Accessori vari

Various accessories

Accessoires divers

CARATTERISTICHE TECNICHE COMUNI AGLI ACCESSORI GEOLINE

Tutti gli accessori GEOLINE sono realizzati nei migliori materiali plastici, le migliori gomme e i particolari metallici sono in acciaio inox AISI 304 o in ottone per garantire la massima affidabilità e durata.

Contalitri meccanico	p.158
Pistole da travaso	p.159
Volantini	p.160
Valvole a sfera per imbottigliamento	p.160
Raccordi in tre pezzi	p.161
Valvole di sfiato	p.162
Valvole di fondo	p.163

TECHNICAL FEATURES FOR GEOLINE ACCESSORIES

All GEOLINE accessories are manufactured using top-quality plastic and rubber materials, with parts made of AISI 304 stainless steel or brass for maximum reliability and long life.

Mechanical flow-meter	p.158
Filling guns	p.159
Handwheels	p.160
Ball valves for bottling	p.160
3-piece hosetails conical seat	p.161
Air-relief valves	p.162
Foot filters	p.163

CARACTERISTIQUES TECHNIQUES DES ACCESSOIRES GEOLINE

Tous les accessoires GEOLINE sont réalisés avec des matériaux plastiques et de caoutchouc de haute qualité. Les parties métalliques sont en acier inoxydable AISI 304 ou en laiton, pour garantir une fiabilité et une durée optimales.

Compteur mécanique	p.158
Pistolets verseur	p.159
Volants à main	p.160
Vannes à bille pour mise en bouteilles	p.160
Raccords 3 pièces siège conique	p.161
Soupapes	p.162
Crépines	p.163

Contaltri meccanico volumetrico

Mechanical volumetric flow-meter

Compteur mécanique volumétrique



Part No.	IN / OUT	Pack
8325000	G 3/4"	3
8325001	G 1"	

Contaltri meccanico volumetrico per uso privato, camera di misurazione a disco oscillante per portate da 20 a 80 litri/minuto.

Progettato per misurazione di idrocarburi si può fornire anche per altri liquidi utilizzando materiali costruttivi compatibili al prodotto da travasare. Una valvola di by-pass permette la taratura in base al liquido travasato.

Dotato di totalizzatore a sei cifre e contatore parziale a tre cifre graduato per decimi, quest'ultimo azzerabile con manopola laterale.

Il frontale dei contaltri è smontabile consentendone, con una semplice operazione di rotazione, un montaggio sia orizzontale che verticale per una lettura ottimale in entrambi i casi.

Possibilità di installazione sia gravitazionale che con pompe a mano o elettriche dotate di by-pass.

Mechanical volumetric flow-meter for domestic use, with mutating-disc type chamber for 20 to 80 l/min deliveries.

Specifically designed for measuring hydrocarbons, it can also be supplied for other liquids, using, on demand, manufacturing materials compatible with the liquid transferred.

The meter has a six-digit totalizer and a three-digit partial counter, with display for 1/10 liters, which can be reset to zero using a side knob.

Turn the counter for disassembling and reassembling the unit. Easy-to-read, it can be placed in a horizontal and vertical position.

It can be installed either under gravity or by using by-pass hand and electrical pumps.

Compteur mécanique volumétrique employé par les particuliers, chambre de mesurage à disque oscillant de haute précision, pour les débits de 20 à 80 l/min.

Etudié pour le transfert des hydrocarbures, il est fabriqué, sur demande, avec des matériaux résistant aux acides ou aux produits alimentaires.

Grâce à une vanne de by-pass il assure le juste calibrage selon le liquide transvasé.

Equipé d'un totalisateur à six chiffres et d'un compteur partiel à trois chiffres avec remise à zéro, dont la dernière marque les dixièmes de litre.

Possibilité de positionnement horizontal ou vertical.

Il permet l'installation soit par gravité soit en utilisant des pompes manuelles et électriques munies de by-pass.

CARATTERISTICHE TECNICHE / TECHNICAL FEATURES / CARACTÉRISTIQUES TECHNIQUES:

Portata / Delivery / Débit	20 to 80 l/min
Pressione d'utilizzo / Max pressure / Pression d'emploi	3.5 bar - 50 PSI
Precisione / Tolerance In & Out connections / Tolérance	±1%
Raccordi di entrata e uscita / In & Out connections / Raccords entrée/sortie	G3/4"F and G1"F
Misurazione parziale / Partial counter / Compteur partiel	999 litres max
Misurazione totale / Total counter / Totalisateur	999999 litres max
Peso versione attacchi G1" / Weight G1" model / Poids modèle G1"	Kg 1.350 lbs. 2.98
Peso versione attacchi G3/4" / Weight G3/4" model / Poids modèle G3/4"	Kg 1.450 lbs. 3.20

Materiali / Materials / Matériaux

Corpo contaltri / Main body / Corps compteur	Polypropylene
Camera interna e ingranaggi / Inner parts and gearing / Chambre et engrenages	PPS
Guarnizioni / O-Rings / Joints toriques	Viton
Componenti metallici interni / Inner metal parts / Composants métalliques	Stainless steel/Inox

Pistola da travaso in alluminio

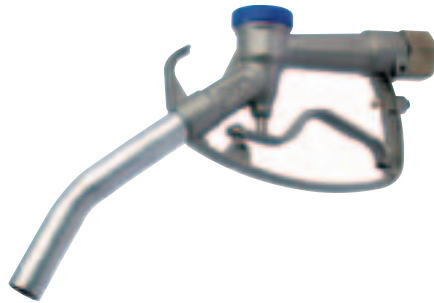
Portata: 80 L/min'.
 Entrata: raccordo girevole G1" F ottone cromato
 Uscita: Tubo ø 25mm.
 Pulsante di fermo per bloccaggio leva.
 Guarnizioni di tenuta resistenti alla benzina.

Aluminium filling gun

Flow rate: 80 L/min'.
 Inlet: G1" F swivel chromed brass
 Outlet: Hose ø 25mm.
 Locking push-button for the lever.
 Gasoline resistant seals.

Pistolet verseur en aluminium

Débit: 80 lt/min'.
 Entrée: Raccord tournant fileté G1" femelle en laiton chromé.
 Sortie: tuyau ø 25mm
 Gâchette avec système de blocage.
 Joints de haute résistance.



Part No.	IN / OUT	FITTING	Pack
8327000	G 1" F	Brass	
8327003	20 mm	Alluminium	3
8327004	25 mm	Alluminium	

Pistola da travaso in polipropilene

Portata: 80 L/min'.
 Entrata: Raccordo girevole G1" F ottone cromato
 Uscita: Tubo ø 34mm.
 Pulsante di fermo per bloccaggio leva.
 Guarnizioni di tenuta resistenti alla benzina.

Polypropylene filling gun

Flow rate: 80 L/min'.
 Inlet: G1" F swivel chromed brass
 Outlet: Hose ø 34mm.
 Locking push-button for the lever.
 Gasoline resistant seals.

Pistolet verseur en polypropylène

Débit: 80 lt/min'.
 Entrée: Raccord tournant fileté G1" femelle en laiton chromé.
 Sortie: tuyau ø 34mm
 Gâchette avec système de blocage.
 Joints de haute résistance.



Part No.	Ø	FITTING	Pack
8327005	G 1" F	Brass	3
8327006	G 3/4" F	Brass	

Pistola da travaso in polipropilene con raccordo girevole

PTG Ø20mm / Ø25mm
 G1" F ott. cromato

Polypropylene filling gun with swivel hosetail

PTG Ø20mm / Ø25mm
 G1" F chromed brass

Pistolet verseur en polypropylène avec raccord tournant.

PTG Ø20mm / Ø25mm
 G1" F laiton chromé

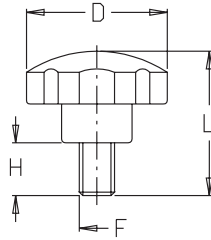


Part No.	Ø	FITTING	Pack
8327007	20 mm	PP	
8327008	25 mm	PP	3
8327009	G 1" F	Brass	

Volantino

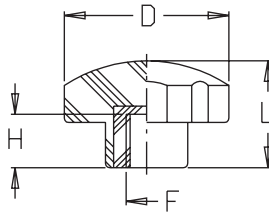


Handwheel



Volant à main

Part No.	F	D mm	H mm	L mm	Pack
8310005	M8	30	30	52	10
8310006	M8	40	40	69	
8310007	M10	50	30	61	
8310008	M10	60	40	77	
8310009	M12	70	40	81	

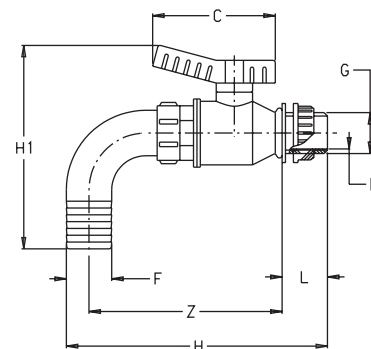
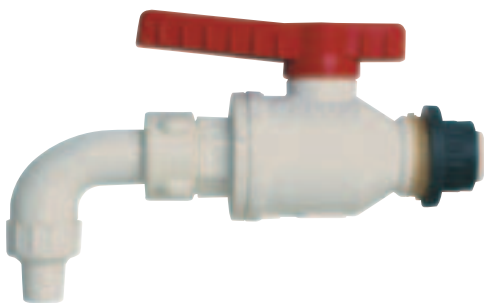


Part No.	F	D mm	H mm	L mm	Pack
8310000	M8	40	15	27	10
8310001	M10	50	16	30	
8310002	M10	60	25	37	
8310003	M12	70	25	40	
8310004	M14	80	35	46	

Valvole a sfera con raccordo riempibottiglia

Ball valves with hosetail for bottling

Vanne à bille avec raccord de mise en bouteille

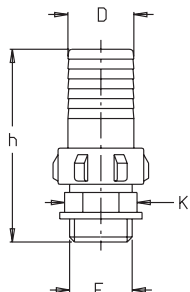


Part No.	G	D mm	L mm	H mm	H1 mm	F mm	C mm	Z mm	Pack
8361003	1/2"	11,5	22	143	109	20	80	120	10
8361004	3/4"	16,5	23	158	120	25	95	131	
8361005	1"	22	30	185	132	30	105	152	

Raccordo in tre pezzi a sede conica con portagomma diritto

Three-piece hosetail conical seat

Raccord droit 3 pièces à siège conique

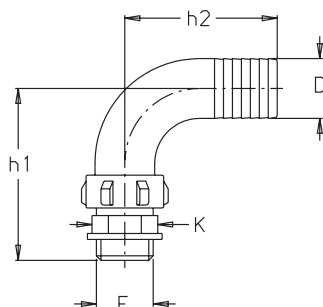


Part No.	F	D mm	K mm	h mm	Pack
8331000	3/4"	25(1")	27	89	20
8331001		20(3/4")	32	74	20
8331002	1"	25(1")	32	88	20
8331003		30	32	95	20
8331004		40	38	110	20
8331005	1 1/4"	25(1")	38	95	10
8331006		30	38	110	10
8331007		35	40	110	10
8331008		40	40	110	10
8331009	1 1/2"	35	46	110	10
8331010		40	46	110	10
8331011		50	46	116	10
8331012	2"	50	56	116	5

Raccordo in tre pezzi a sede conica con portagomma curvo

Three-piece elbow conical seat

Raccord coudé 3 pièces à siège conique

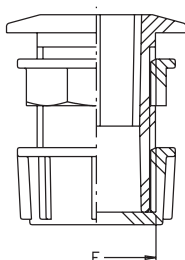


Part No.	F	D mm	K mm	h1 mm	h2 mm	Pack
8343000	3/4"	25(1")	27	87	53	20
8343001		20(3/4")	32	70	45	20
8343002	1"	25(1")	32	83	53	20
8343003		30	32	88	61	20
8343004		40	38	107	78	20
8343006	1 1/4"	30	38	97	61	10
8343007		35	40	107	78	10
8343008		40	40	107	84	10
8343009		35	46	107	78	10
8343010	1 1/2"	40	46	107	84	10
8343011		50	46	115	86	10
8343012	2"	50	56	115	86	5

Kit bocchettone di scarico completo di guarnizioni

Tank outlet kit with gaskets

Kit goulotte de vidange avec joint

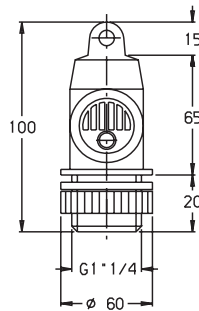


Part No.	F	Pack
8359201	3/4"	25
8359251	1"	25
8359301	1 1/4"	25
8359351	1 1/2"	25
8359401	2"	20

Valvola di sfiato a doppio effetto portata
150 hl/h

Double effect breather valve flow rate
150 hl/h

Soupape à double effect, débit 150
hl/h

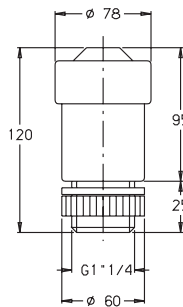


Part No.	Pack
8367001	10

Valvola di sfiato a doppio effetto portata
500 hl/h

Double effect breather valve flow rate
500 hl/h

Soupape à double effect, débit 500
hl/h

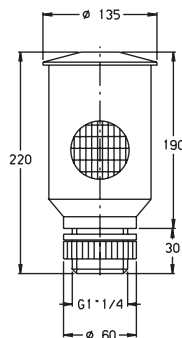


Part No.	Pack
8367002	10

Valvola di sfiato a doppio effetto portata
1000 hl/h

Double effect breather valve flow rate
1000 hl/h

Soupape à double effect, débit 1000
hl/h

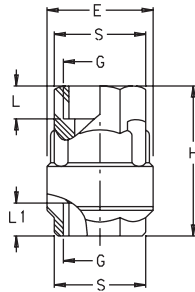


Part No.	Pack
8367003	5

Valvola di ritegno

Non-return valve

Vanne anti-retour

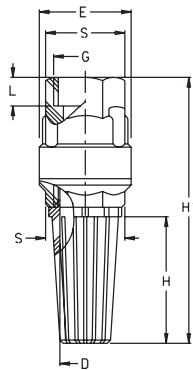


Part No.	G	E mm	H mm	L mm	L1 mm	S mm	Pack
8369000	1/2"	40	62	16	16	27	20
8369001	3/4"	47	68	17	17	34	20
8369002	1"	57	75	17	18	41	20

Valvola di fondo

Foot valve

Crépine

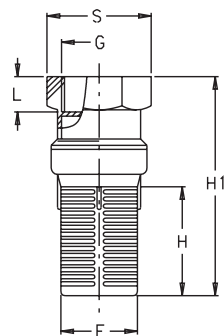


Part No.	G	E mm	H mm	H1 mm	D mm	L mm	S mm	Pack
8357000	1/2"	40	105	38	15	16	27	20
8357001	3/4"	47	117	43	20	17	34	20
8357002	1"	57	129	48	25	17	41	20

Valvola di fondo

Foot valve

Crépine



Part No.	G	E mm	H mm	H1 mm	L mm	S mm	Pack
8357003	1"1/4	37	122	55	18	50	10
8357004	1"1/2	42	122	58	18	55	10
8357005	2"	50	150	79	18	68	10