

POLY Series

 **126** **33.3**
l/min USGPM

 **150** **39.6**
l/min USGPM

 **15** **218**
bar P.S.I.

Pompe a 3 membrane-pistone semidrauliche

Three piston semi-hydraulic diaphragm pump.

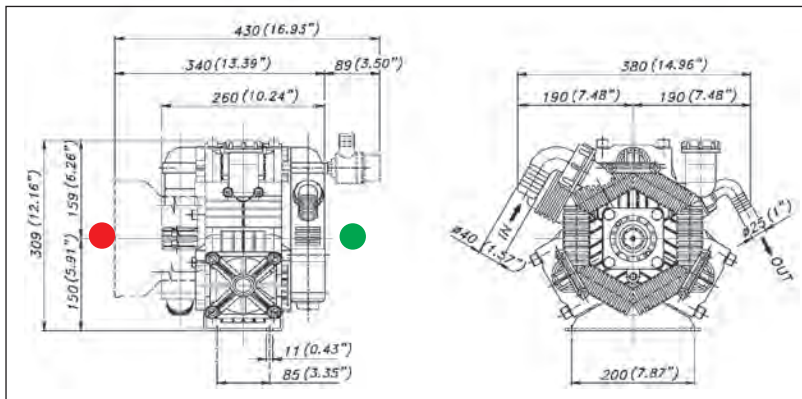
Мембранно-поршневой насос с 3 полугидравлическими узлами

POLY 2120

62.6050.97.3 - VS
62.6051.97.3 - VDA
62.6052.97.3 - VD
62.6053.97.3 - VA
62.6055.97.3 - VC

POLY 2150

62.6117.97.3 - VS
62.6118.97.3 - VDA
62.6119.97.3 - VD
62.6121.97.3 - VA
62.6130.97.3 - VC

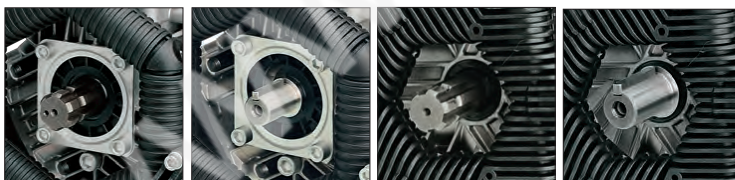





Optional - Optional - По заказу  

TABELLA RENDIMENTI - PERFORMANCE CHART - ТАБЛИЦА ПРОИЗВОДИТЕЛЬНОСТИ

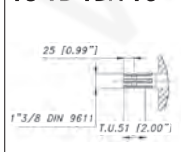
| POLY 2120 | g/min; R.P.M.; об/мин | | | | | | | | POLY 2150 | g/min; R.P.M.; об/мин | | | | | | | |
|------------------------------|-----------------------|------------|----------------|------------|----------------|------------|----------------|------------|------------------------------|-----------------------|------------|----------------|------------|----------------|------------|----------------|------------|
| g/min R.P.M. → об/мин; | 400 | | 450 | | 500 | | 550 | | g/min R.P.M. → об/мин; | 400 | | 450 | | 500 | | 550 | |
| BAR P.S.I. | L/min USGPM | KW HP | L/min USGPM | KW HP | L/min USGPM | KW HP | L/min USGPM | KW HP | BAR P.S.I. | L/min USGPM | KW HP | L/min USGPM | KW HP | L/min USGPM | KW HP | L/min USGPM | KW HP |
| 2 29 | 92 24,2 | 0,4 0,5 | 103 27,2 | 0,4 0,5 | 115 30,3 | 0,4 0,6 | 126 33,3 | 0,5 0,7 | 2 29 | 109 28,8 | 0,4 0,6 | 123 32,4 | 0,5 0,6 | 136 36,0 | 0,5 0,7 | 150 39,6 | 0,6 0,8 |
| 5 72,5 | 91 24,0 | 0,9 1,2 | 102 27,0 | 1,0 1,3 | 114 30,0 | 1,1 1,5 | 125 33,0 | 1,2 1,6 | 5 72,5 | 108 28,4 | 1,1 1,4 | 121 32,0 | 1,2 1,6 | 135 35,5 | 1,3 1,8 | 148 39,1 | 1,5 1,9 |
| 10 145 | 90 23,8 | 1,8 2,4 | 101 26,8 | 2,0 2,7 | 113 29,8 | 2,2 3,0 | 124 32,8 | 2,4 3,3 | 10 145 | 105 27,9 | 2,1 2,8 | 119 31,3 | 2,3 3,1 | 132 34,8 | 2,6 3,5 | 145 38,3 | 2,8 3,8 |
| 15 218 | 89 23,4 | 2,6 3,5 | 100 26,4 | 2,9 3,9 | 111 29,3 | 3,3 4,4 | 122 32,2 | 3,6 4,8 | 15 218 | 104 27,5 | 3,1 4,1 | 117 30,9 | 3,4 4,6 | 130 34,3 | 3,8 5,1 | 143 37,8 | 4,2 5,6 |

ALBERO POMPA - PUMP SHAFT - ВАЛ НАСОСА

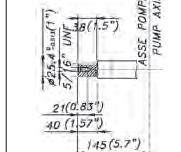


 **ANT.** - FRONT - ПЕР.  **ANT.** - FRONT - ПЕР.  **POST.** - REAR - ЗАД.  **POST.** - REAR - ЗАД.

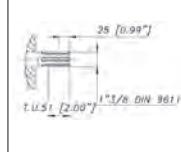
VS-VD-VDA-VC



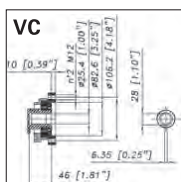
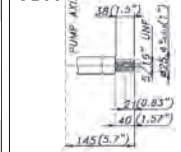
VA




VD



VDA



 **POST.** - REAR - ЗАД.

Caratteristiche tecniche

Specifications

Технические характеристики

| g/min; R.P.M.; об/мин; | g/min. | R.P.M. | 550 | 550 |
|--|---|---------------|-----------|---------|
| Potenza - Power - Мощность | KW | HP | | |
| Peso - Weight - Вес | Kg | lb | 19 | 41,8 |
| Dislivello aspirazione Negative pressure Перепад уровня при всасывании | MAX | mt | ft | 1,5 4,9 |
| | Servizio discontinuo Discontinuous service - Прерывистая работа | mt | ft | 3 9,8 |
| Ø Aspirazione - Ø Intake - Ø Вход | mm | in | 40 | 1 9/16 |
| Ø Mandata - Ø High pressure - Ø Выход | mm | in | 25 | 1" |
| Max. Temperatura - MAX Temperature - Макс Температура | °C | °F | 60 | 140 |
| Tipo olio - Oil type - Тип масла | SAE | W | 30 | 30 |
| Capacità olio - Oil capacity - Объем масла | lt | U.S.G. | 1 | 0,26 |