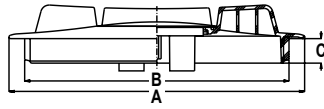


Coperchi per cisterne serie Manta con 2 sfianti a molla.

Tank lids, Manta series, with 2 spring breather.

Крышки для емкостей серии Manta с 2 пружинными воздуховыпускными устройствами.



Part No.	A mm	B mm	C mm	BREATHER	Pack
8152001	350	313	29	2 SPRING VALVE	10
8158001	450	408	23	2 SPRING VALVE	10



Ordinare anello e filtro separatamente.
 Ring and filter to be ordered separately.
 Фильтр и кольцо заказываются отдельно.

FILTER

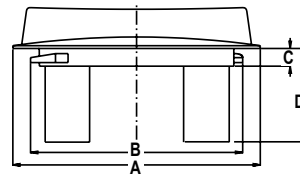


Pag. 221

RING



Pag. 220



Part No.	A mm	B mm	C mm	D mm	BREATHER	Pack
8140001	140	120	8	52,5	2 SPRING VALVE	10

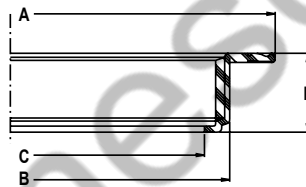


RINGS

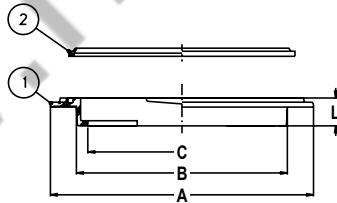
Anelli per coperchi serie Manta.

Rings for tank lids (Manta series).

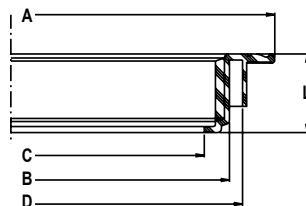
Кольца для крышек серии Manta.



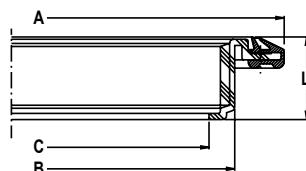
Part No.	A mm	B mm	C mm	L mm	FIXING	Pack
8148000	262	217	192	39	FLAT SURFACES	10
8154000	357	320	290	38		
8160000	457	415	382	35		
8166000	617	567	536	40,5		



Part No. 1	Part No. 2	A mm	B mm	C mm	L mm	FIXING	Pack
8142000	G00000000	154	125	112	17	FLAT SURFACES	10



Part No.	A mm	B mm	C mm	L mm	D mm	FIXING	Pack
8148001	262	217	192	39	230	SIDE CONNECTION	10
8154001	357	320	290	38	335		
8160001	457	415	382	35	430		



Part No.	A mm	B mm	C mm	L mm	GASKET	FIXING	Pack
8148002	265	217	192	39	G00000001	FLAT SURFACES c/w GASKET	10
8154002	368	320	290	38	G00000002		
8160002	463	415	382	35	G00000003		
8166001	612	567	536	35	G00000044		