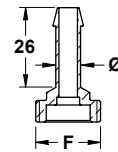


Raccorderia in ottone

Brass fittings

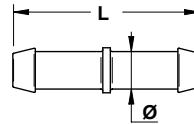
Латунные фитинги

Portagomma filettato
 Threaded hosetail
 Резьбовой штуцер



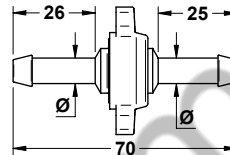
Part No.	Ø mm	F	Pack
8304011	8	G 1/2"	
8304012	10	G 1/2"	50
8304013	13	G 1/2"	

Giunto semplice diritto
 Simple union
 Простое прямое соединение



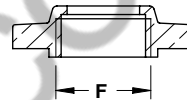
Part No.	Ø mm	L mm	Pack
8308003	8	45	
8308004	10	50	25
8308005	13	50	

Giunto combinato pesante
 Heavy combined union
 Комбинированное тяжелое соединение



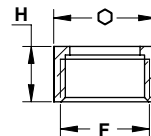
Part No.	Ø mm	Pack
8308000	8	
8308001	10	25
8308002	13	

Girello
 Fly nut
 Барашковая гайка



Part No.	F	Pack
8304006	G 1/2"	25

Ghiera
 Nut
 Зажимная гайка



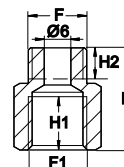
Part No.	F	H mm	☞	Pack
8304036	G 1/2"	13	24	25
8304039	G 3/4"	18	32	10

Guarnizione per raccordo con girello
 Gasket for swivel fitting
 Прокладка для фитинга с барашковой гайкой



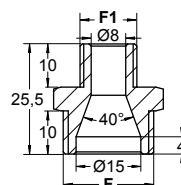
Part No.	Ø	Pack
G00002035	1/2"	50

Nipplo per barre irroranti
 Nipple for spraying booms
 Ниппель для распылительных штанг



Part No.	F	F1	L mm	H mm	H12 mm	☞	Pack
I00000003	G1/4	G1/4	23	12	7	17	
I00000004	G1/4	G1/4	30	16	7	17	1

Nipplo per barre irroranti
 Nipple for spraying booms.
 Ниппель для распылительных штанг



Part No.	F	F1	☞	Pack
I00000005	G1/2	G1/4	22	1